



350 S. St. Charles St. Jasper, In. 47546
Ph. 812.482.2932 Fax 812.634.6632
www.ridetech.com

Part # 13076799
02-05 Dodge ½ ton Airbar

Components:

2	90002019	Rolling sleeve air spring
2	90000119	Air spring roll plate
1	90000426	Passenger front upper bar frame bracket
1	90000425	Driver side front upper bar frame bracket
1	90000427	Upper bridge assembly
2	90000044	Lower bridge upper axle bracket
1	90000232	Lower bridge assembly
1	90000442	Passenger side upper shock mounting plate
1	90000441	Driver side upper shock mounting plate
1	90000230	Panhard bar axle mount
2	90000994	Upper bar – TW 30.75" (CC= 32.50")
2	90001036	Lower bars – WW 32.5" (Uses factory Leaf spring bolt)
1	90000969	Panhard bar – TW20.187" (CC= 22 1/16")
2	90001617	.625" shock studs (Lower shock mount)
4	90001085	Lower bar forward mount bushings
2	90001094	Inner bushing sleeves – Installed in front of lower bar
5	90001942	Rubber bushings pressed into bars and rod ends
2	90001584	Threaded rod end
1	90001589	Kevlar lined Heim end
3	99752004	¾" SAE jam nut
2	90001082	Short bump stops
1	99010012	Hardware Kit

Hardware Kit – Part # 99010012

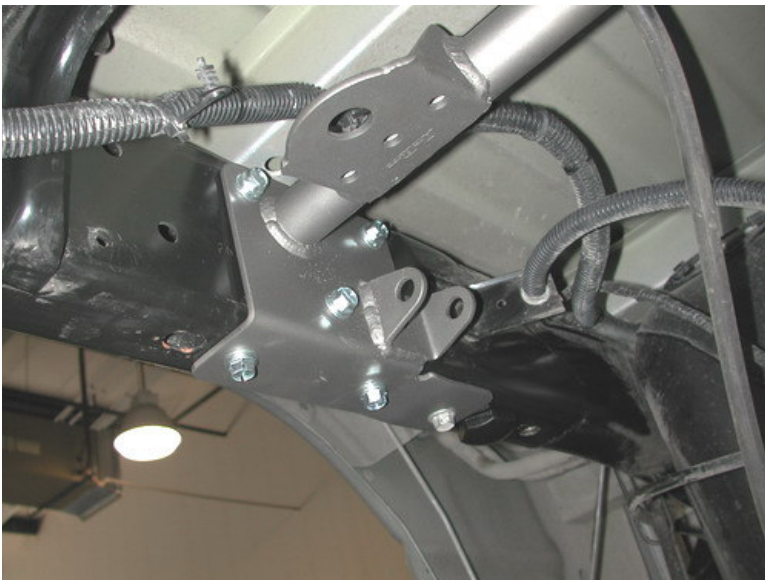
2	1/2 X 2 1/2 Gr. 5 USS Bolts	Upper Shock Mount		
2	1/2 USS Gr. 5 Nyloc Nuts	Upper Shock Mount		
6	5/16 X 1 1/2 USS Gr. 5 Bolts	Panhard Bar Axle Mount		
6	5/16 SAE Lock washers	Panhard Bar Axle Mount		
6	5/16 SAE Flat washers	Panhard Bar Axle Mount		
8	5/8 x 6 1/2 SAE Gr.8 Bolts	Lower Bridge to Axle		
8	5/8 SAE Gr.8 Nyloc Nuts	Lower Bridge to Axle		
16	5/8 SAE Gr.8 Flat washers	Lower Bridge to Axle		
8	7/16 X 1 Gr.5 USS Bolts	Front Upper Bar Mounts to Frame		
8	7/16 Gr.5 USS Nyloc Nuts	Front Upper Bar Mounts to Frame		
16	7/16 Gr.5 SAE Flat washers	Front Upper Bar Mounts to Frame		
1	5/8 X 2 1/2 SAE Gr.8 Bolts	Panhard bar to rearend bracket		
2	5/8 SAE Gr.8 Flat washers	Panhard bar to rearend bracket		
1	5/8 SAE Gr.8 Lock washer	Panhard bar to rearend bracket		
7	5/8 X 2 3/4 SAE Gr.8 Bolts	Bar ends to brackets		
7	5/8 SAE Gr.8 Thin Nyloc Nuts	Bar ends to brackets		
4	3/8 X 1 Gr.5 USS Bolts	Air spring Mounting		
20	3/8 Gr.5 SAE Flat washers	Air spring, Bridge, and Shock mounting		
20	3/8 Gr.5 SAE Lock washers	Air spring, Bridge, and Shock mounting	18	3/8 X
1	Self Tapping Bolts	Upper Bridge and Shock Bracket		

*NOTE - Drill hole to 5/16" for self tapping bolts.

1. Raise vehicle to a safe and comfortable working height supported by jack stand. Let the suspension hang freely.
2. Remove the leaf springs and shocks while supporting axle.



1. The factory exhaust hangers need to be cut off and ground smooth for upper bridge clearance.
2. Drill and tap a 3/8"-16 hole directly in the center of the two OEM bump stop holes. This is the location for your new shorter bump stop.



3. Install the upper bridge assembly between frame rails. The bridge will be indexed by the front hole in the bottom of the bridge aligning with the rear OEM bump stop hole. Drill the remaining 5 holes with a 5/16 drill bit. Secure with supplied 3/8" x 1" self-tapping bolts.



4. Bolt lower bridge assembly to axle using $5/8"$ x $6-1/2"$ bolts. The bolt in the upper bracket will align the bridge with leaf spring alignment pin. Tighten the bolts evenly.



5. Align frame bracket with the hole in the leaf spring hanger. Drill remaining 2 holes. Use the $7/16"$ x $1"$ bolts to secure.

6. Install upper and lower bars using the $5/8"$ x $2-3/4"$ bolts supplied. The lower front bar uses the factory bolt. The upper bar is slightly shorter.

Note: The exhaust may need to be modified, or a turndown may be installed.



7. Remove the top 6 bolts on the axle cover. Place the panhard bar axle bracket over these 6 holes and tighten the $5/16"$ x $1-1/2"$ bolts supplied to factory specs.

8. Attach the panhard bar Heim end to the axle bracket using the $5/8"$ x $2-1/2"$ bolt. Use the $5/8"$ x $2-3/4"$ to fasten the rubber end to upper bridge.

Note: The axle vent tube may need to be shortened.



9. Thread the air fitting into the top of the air spring, using a thread sealant.

10. Fasten the air spring to the upper and lower bridges; use the 3/8" x 1" bolts and snug. Be careful not to over tighten these bolts, it will damage the air spring. Make sure the air spring does not rub the brake line.

Note: The air spring in the picture is different that the one you will be installing.



11. Remove the rear two bridge bolts from the bottom of the frame. Install the upper shock mount to the outside of the frame. Note there is a passenger and drivers side bracket. Drill the remaining 4 holes with a 5/16" drill bit, and tread in 3/8" x 1" self-tapping bolts.

12. Insert shock stud through lower bridge and tighten. Install the shock using 1/2" x 2-1/2" bolt on top and then slide over stud on bottom with a washer on both sides of shock. Apply a small amount of anti-seize on stud threads.

13. The final step is to check all clearances through full suspension travel. Check all brake, fuel, air, and vent lines. Make sure nothing can rub the air spring. At ride height the air spring should be approx. 10.5" tall.

