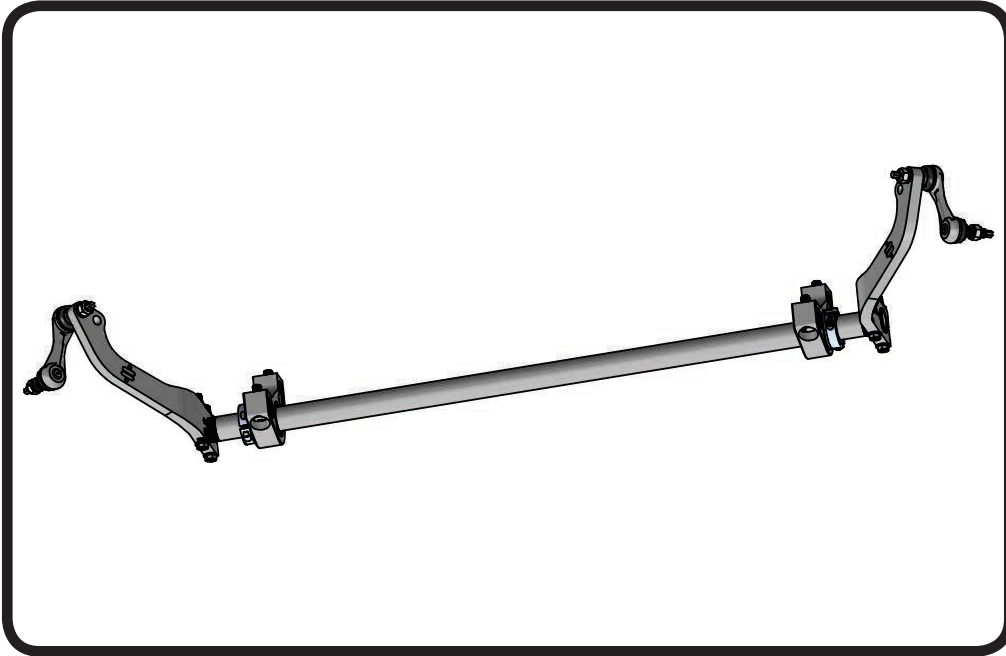




**Part # 11599100 - 2005-2013 C6 Corvette Front MuscleBar**



**Recommended Tools**



# 2005-2013 C6 Corvette Front MuscleBar Installation Instructions

**Table of contents**

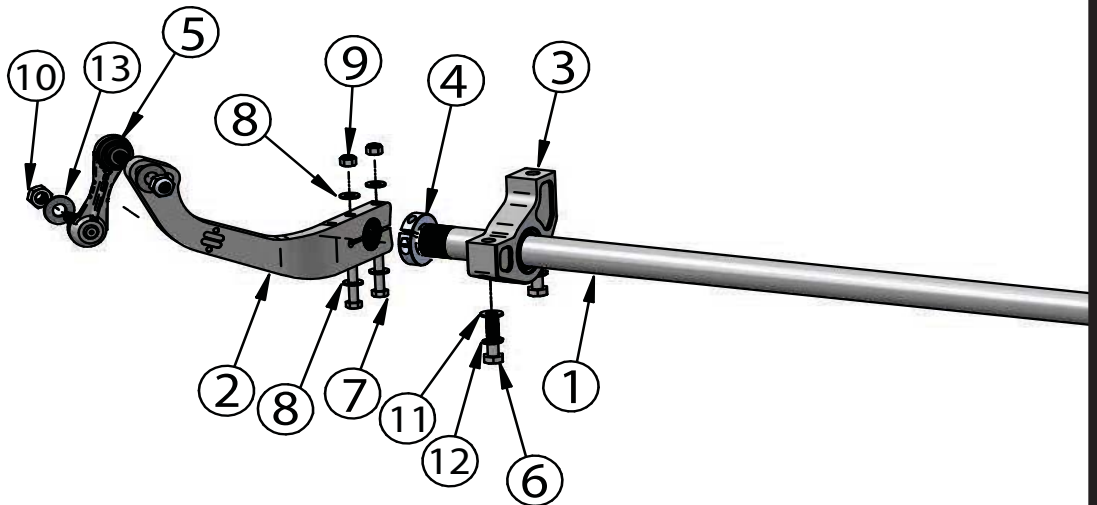
- Page 2..... Included components and Hardware List
- Page 3..... Getting Started
- Page 4..... MuscleBar Installation
- Page 5..... Final Tightening and Adjusting





### Major Components .....In the box

Item #	Part #	Description	QTY
1	70011923	Splined Rear MuscleBar	1
2	90002133	MuscleBar Arms - Driver	1
2	90002134	MuscleBar Arms - Passenger (Not Shown)	1
3	70012274	MuscleBar Mount - Driver	1
3	70012144	MuscleBar Mount - Passenger (Not Shown)	1
4	70011928	Locking Ring	2
5	90000929	90 Degree, 12mm PosiLink	4
	70012284	Inner Delrin MuscleBar Bushing (Installed in Mount)	2
	70012285	Outer MuscleBar Bushing (Installed in Mount)	2



### Hardware List .....In the box (Kit # 99010056)

Item #	QTY	Part Number	Description	Location
6	4	99111009	M10-1.5 x 50mm Hex Bolt	Bar Mount to Cradle
7	4	99311024	5/16"-18 x 2 3/4" Hex Bolt	SwayBar Arm Pinch Bolt
8	8	99313001	5/16" SAE Flatwasher	SwayBar Arm Pinch Bolt
9	4	99312003	5/16"-18 Nylok Nut	SwayBar Arm Pinch Bolt
10	4	99122009	M12-1.75 Nylok Nut	PosiLink to Swaybar and Control Arm
11	4	99373003	3/8" SAE Flatwasher	Bar Mount to Cradle
12	4	99113002	M10 Split Lockwasher	Bar Mount to Cradle
13	4	99433002	7/16" SAE Flatwasher	PosiLink

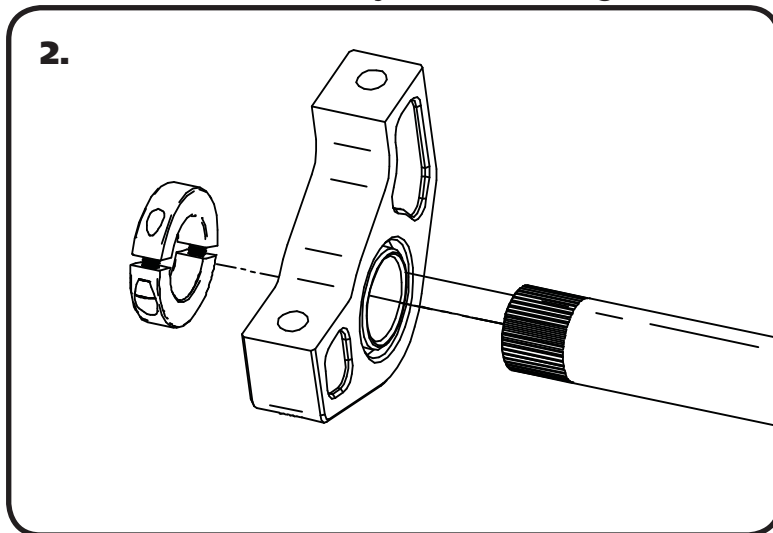


### Getting Started.....

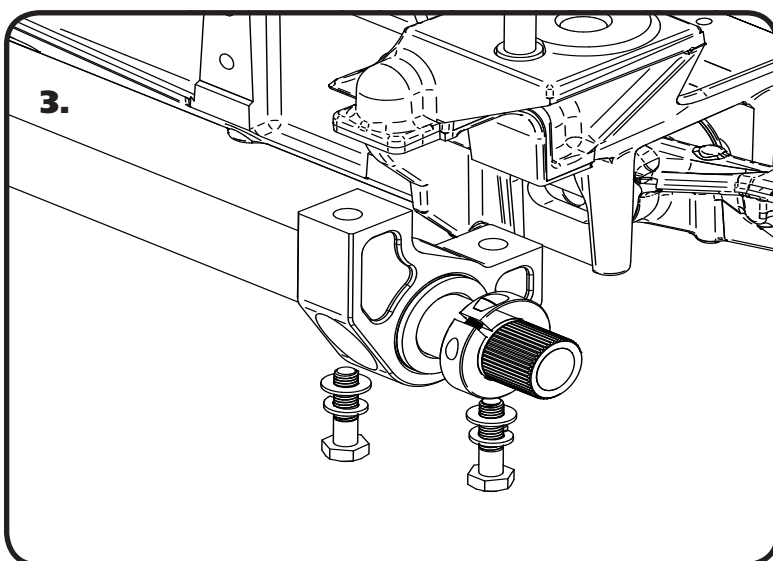
Congratulations on your purchase of the Ridetech Rear MuscleBar. This kit has been designed to give your Corvette excellent handling along with a lifetime of enjoyment. Some of the key features of this MuscleBar: PosiLinks - The PosiLink makes the reaction of the swaybar instantaneous. Tuneability - this Musclebar has 2 positions to aid in the tuning your cars handling.

**Note: THE ARMS CAN BE CLOKED ON THE CAR OR THEY CAN BE CLOKED ON A FLAT SURFACE BEFORE INSTALLATION. DO THIS BY SLIDING THE ARMS ON THE BAR USING A FLAT SURFACE TO KEEP THEM PARALLEL WITH EACH OTHER. AFTER YOU HAVE THE ARMS INSTALLED PARALLEL, MARK THE ARMS AND THE BAR. ALIGN THE MARKS WHEN INSTALLING THE ARMS AND THEY WILL BE CLOKED THE SAME.**

#### 1. Remove the OEM Swaybar and Linkage.



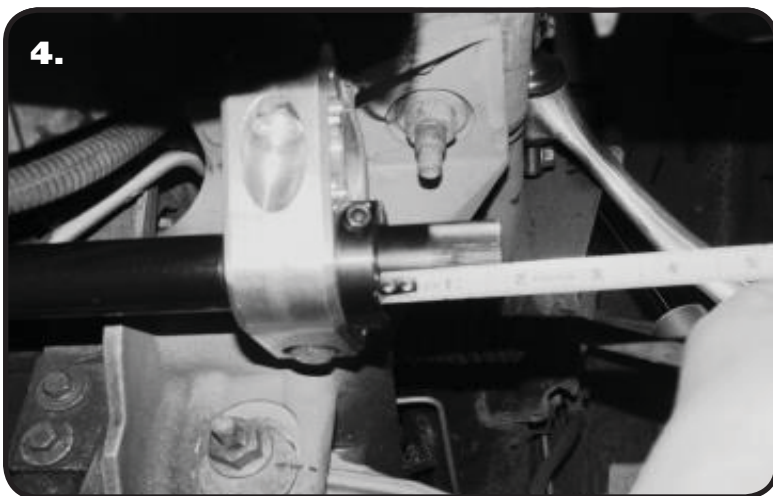
2. Install both Bushing Mounts onto the Splined Bar with the Flange side of the Inner Bushing facing out. With the Bushing Mount slid onto the bar, install the Locking Ring, but do not tighten. The kit contains a Driver and Passenger mount. The only difference is the direction the Flange on the Bushing faces. The Flange faces out toward the Locking Ring.



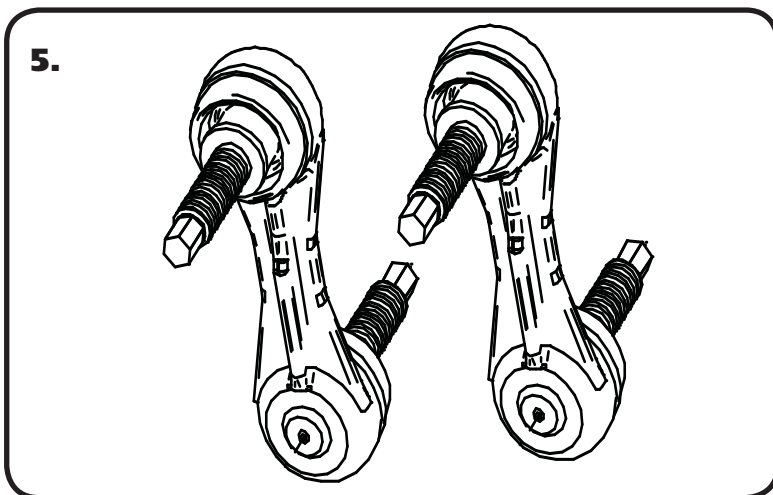
3. Bolt the assembly into the OEM Swaybar location, with the TALL SIDE FORWARD, using (2) 3/8" Flatwashers, (2) 10M Lockwashers and (2) 10M-1.50 x 40mm Hex Bolts on each Mount. The mounts are bolted with the long side forward. Run the bolts down until they touch, but DO NOT TIGHTEN.



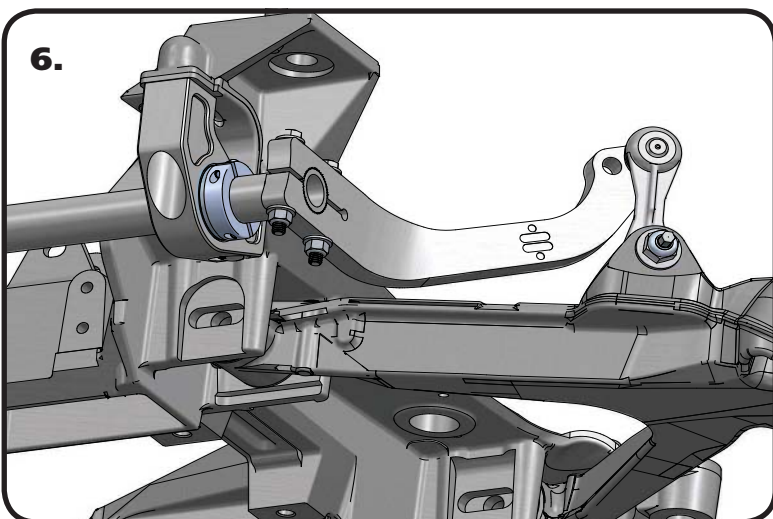
### MuscleBar Installation



4. Center the Splined Bar by measuring each side and sliding it in the mounts until both sides measure the same. Once the Splined Bar is centered, tighten the Mounting Blocks. Next, slide the Locking Ring up against the Bushing and tighten the Locking Ring.



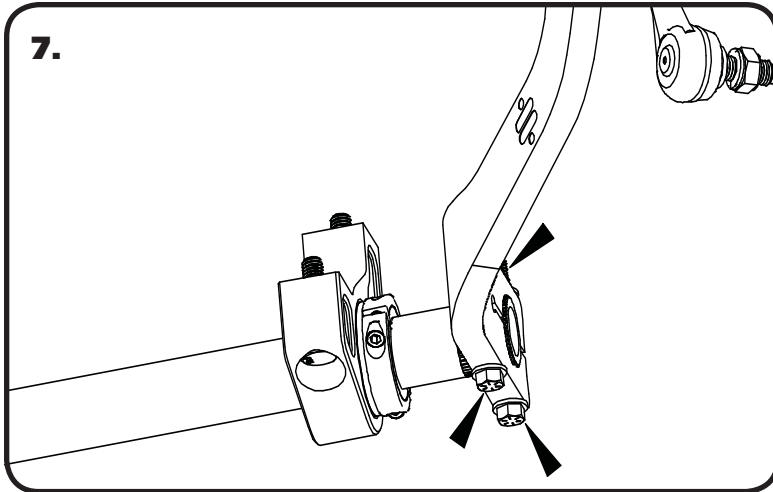
5. Diagram 5 shows the PosiLinks and Diagram "6" shows their position.. Using Diagram "6", attach the PosiLinks to the Lower Control Arm using (1) 7/16" Flatwasher & (1)12mm Nylok.



6. The PosiLink can be used to get the arms clocked the same. Install one Arm on the Drivers Side and rotate it up and down until you can insert the PosiLink in the rear hole. On the Passenger Side, install the arm on the Sway Bar. Try to insert the PosiLink in the rear hole. Remove the Arm from the Splines and move it one Tooth at a time, reinstalling the arm until the PosiLink will go in the rear hole easily.



### Final Tightening



7. After the arms are installed, insert (2) 5/16" x 2 3/4" bolts with a 5/16" washer on each, through the Clamping Holes in the Arms. Install a 5/16" Flatwasher and 3/8" Nylok on the Bolt and Torque to 25 ftlbs. It will be necessary to torque each bolt multiple times.

### Final Tightening

8. After installation, be sure that the Musclebar will go through the entire suspension travel without contacting anything.

The MuscleBar has 2 positions to aid in the tuning of your car's handling. We start in the rear position and tune from there. The Position to the front of the car will make the Musclebar stiffer. The position to the rear of the car will make the MuscleBar softer.

**Note:** The Delrin Bushings are Self-Lubricating and will not need to be lubricated.

### PosiLink Position Adjustment

Start by removing the Nylok nuts from the PosiLink on the MuscleBar Arm. With the Nuts removed, slide the Posilink out of each Arm. It is best to have each one removed from the Arms before trying to move the PosiLink to a different hole. Once they are both removed, insert the PosiLink into the desired hole. DO NOT install the Nut/Washer until both Posilinks are inserted into their arms. With both inserted, Install Washer and NUT and tighten Hardware. Be advised, the car will handle different. Take the time to get the feel of the car after changing the PosiLink location.

### STILL HAVE QUESTIONS?

#### Tech line hours

Monday - Friday

8AM - 6PM (EST) ..... 812-482-2932