



350 S. St. Charles St. Jasper, In. 47546  
 Ph. 812.482.2932 Fax 812.634.6632  
[www.ridetech.com](http://www.ridetech.com)

**41230000 64-67 GM "A" Body TigerCage**

**Basic Cage**

1	41230915	Main Hoop
1	41230906	Driver side hoop floor mount
1	41230905	Passenger side hoop floor mount
2	41230909	Hoop mount "B" pillar reinforcement plate
1	41230901	Driver side hoop to frame mount (inner)
1	41230900	Passenger side hoop to frame mount (inner)
1	41230908	Driver side hoop to frame mount (outer)
1	41230907	Passenger side hoop to frame mount (outer)
1	41230914	Driver side package tray bar
1	41230913	Passenger side package tray bar
2	41230910	Package tray reinforcement plate
1	41230912	Driver side trunk bar
1	41230911	Passenger side trunk bar
2	41230902	Trunk bar to frame mount
2	49990005	Clamp tabs
1	49990003	TigerClamp P (threaded)
1	49990001	TigerClamp P
1	49990004	TigerClamp D (threaded)
1	49990000	TigerClamp D
1	90002276	Tube of Anti-Seize
1	41239900	ENG34111-Polyurethane body mount kit

**Hardware:**

16	99371023	3/8" x 1" USS Gr. 8 SHCS	Clamps / Main hoop to mount
44	99371004	3/8" x 1 1/4" USS Gr. 8 bolt	Mounting brackets
4	99373007	3/8" x 1" self-tapping screws	Mounting brackets
40	99372001	3/8" USS Gr.8 Nylok nut	Mounting brackets
4	99373002	3/8" Lock washer	Mounting brackets
88	99373002	3/8" SAE flat washer	Mounting brackets
2	49990008	1/2" x 1 1/2" 12 point Gr. 8 bolt	Bar to clamp tab
2	49990009	1/2" Flange nut	Bar to clamp tab



**41230906**



**41230901**



**41230908**



**41230910**



**41230909**



**41230902**

## 41230000 Installation Instructions

- Initial fitment of the floor mount brackets must be done under the carpet. Final installation can be done under or over the carpet.
- Use Anti-Seize on all fasteners that are threaded into stainless clamps or brackets.
- Install all bars before final tightening.
- Always tighten the tab side of the clamp first.
- Torque all 3/8" fasteners to 45 ft-lbs and all 1/2" fasteners to 75 ft-lbs.
- Make sure the clamp is exactly where you want it before tightening as the clamp may scratch the tubing.
- **Watch for fuel and brake lines when drilling holes through the floor pan.**



1. Start by replacing all of the body mounts with the new polyurethane mounts included. Using the old rubber mounts can cause clearance and fitment issues.

2. Position the main hoop floor mount, so that the front of it is 1 7/8" behind the front edge of the body seam on the rocker.



3. Using the bracket as a template; drill four 3/8" holes through the floor pan. Drop 3/8" x 1 1/4" bolt w/ flat washers down through floor pan.



4. Bolt the inner frame brackets to the bottom of the floor pan using 3/8" Nylok nuts and flat washers.

5. The bracket will be fastened to the frame with two 3/8" x 1" self-tapping screws. (The frame is boxed in this section.) The holes must first be drilled using a 5/16" bit.



7. The outer two holes of the hoop mount will attach to the outside of the frame rail with this bracket. Using the bracket as a template; drill two 3/8" holes into the frame. Use two 3/8" x 1 1/4" bolts, flat washers and Nylok nuts to secure the bracket to the frame.



8. Using the bracket as a template; drill two 3/8" holes into the "B" pillar. Place this reinforcement plate inside the quarter. Secure assembly with two 3/8" x 1 3/4" bolts, flat washers, and Nylok nuts.

9. Bolt the main hoop to the floor mounts using four 3/8" x 1" socket head cap screws.



11. Using the template on page 7; drill four  $\frac{3}{8}$ " holes into the top of the package tray.

12. Attach a "D" Clamp to the main hoop with the tab facing rearward with the top of the clamp approximately  $35 \frac{9}{16}$ " above the floor mount. Use  $\frac{3}{8}$ " x 1" socket head cap screws on the clamp.

13. Place the driver side package tray bar on the package tray and secure it to the clamp with a  $\frac{1}{2}$ " x  $1 \frac{1}{2}$ " 12 point bolt and flange nut.



9. In order to keep the "T" in the casting facing up, and the bolts facing the correct direction, **there are two different direction clamps**. Be very careful as to which clamp halves you are bolting together. Refer to the image on page 6 for clamp locations.

10. A correctly assembled clamp should look like the one in the picture shown to the left; **there should be a gap on one side for the tab to slide into**.



14. Drop four  $\frac{3}{8}$ " x  $1 \frac{1}{4}$ " bolts with flat washers down through the bar mount and the holes in the package tray.



15. Fasten the trunk bar to the package tray bar with four 3/8" Nylok nuts and flat washers.



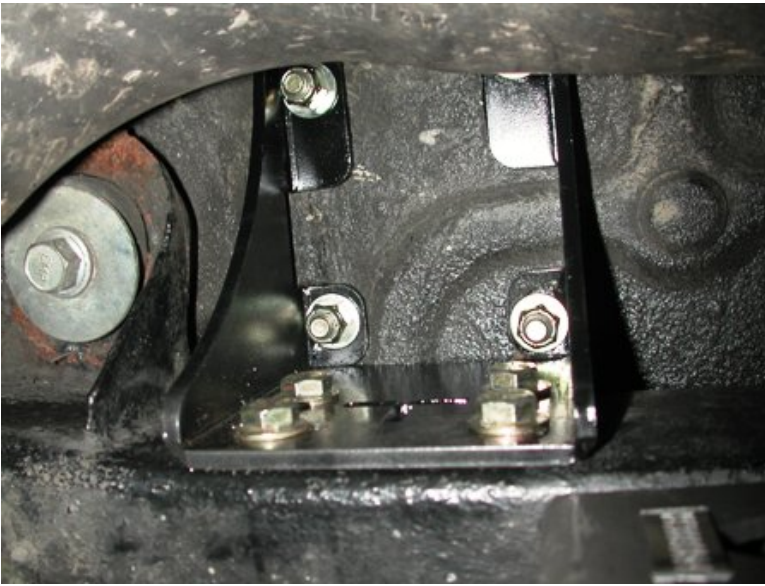
16. Using the trunk bar as a template drill two 3/8" holes through the vertical surface of the package tray.

17. Place the reinforcement plate on the inside of the package tray and secure with assembly with two 3/8" x 1 1/4" bolts, flat washers and Nylok nuts. Nuts should face the trunk.



18. Next using the trunk bars as templates; mark the 4 holes in the floor pan with a center punch. First drill the hole with a 1/8" bit. Before drilling the holes to 3/8", hold the bottom frame bracket up against the frame rail to ensure that the bolt holes will align. Re-drill 1/8" holes if necessary.

19. Drop four 3/8" x 1 1/4" bolts with flat washers down through the floor pan.

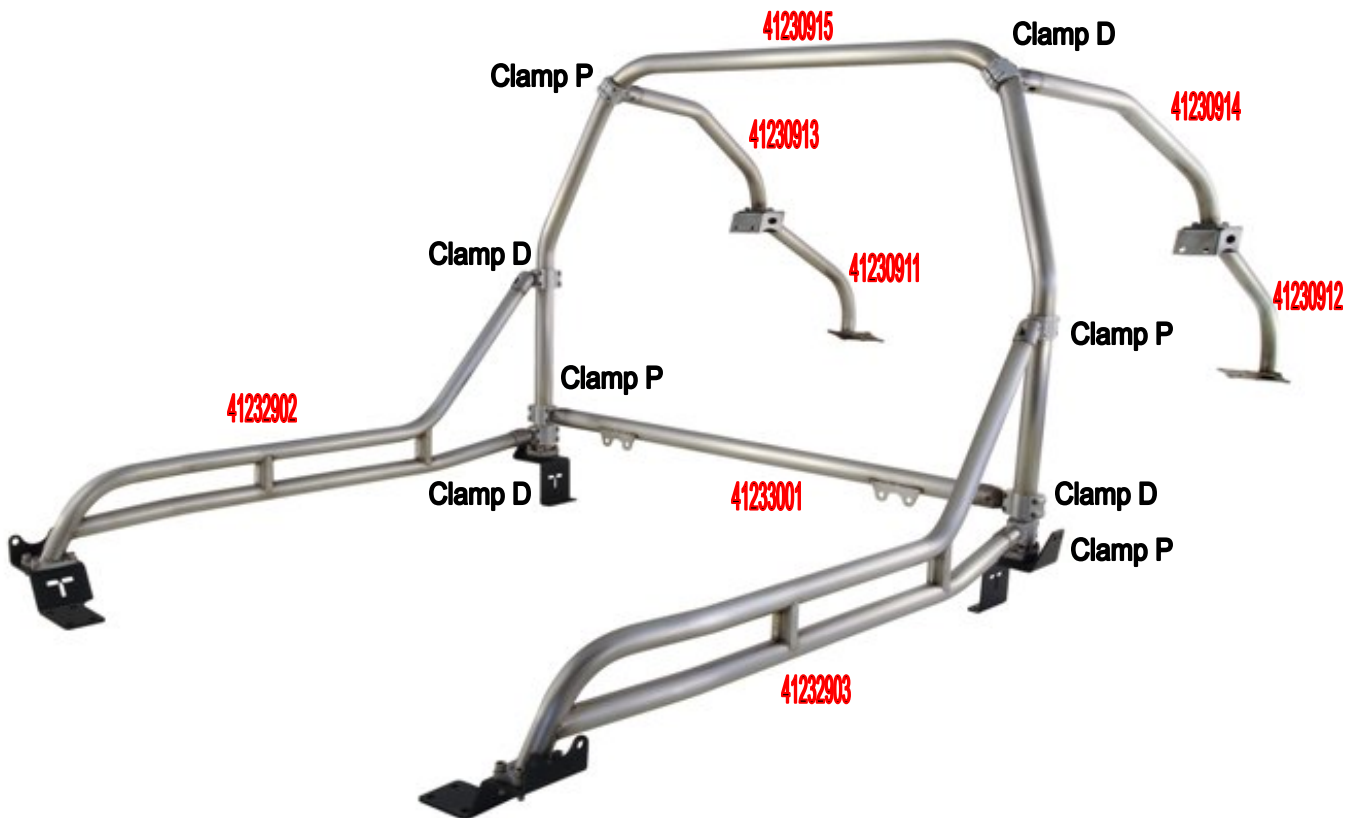


20. Secure the frame bracket to the floor pan with four 3/8" Nylok nuts and flat washers.

21. Using the bracket as a template; drill four 3/8" holes through the frame rail. Fasten the bracket to the frame with four 3/8" x 1 1/4" bolt, Nylok nuts and flat washers.

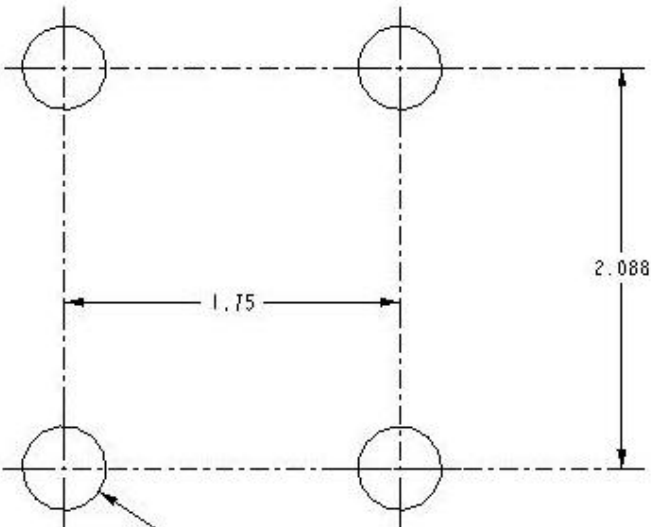
22. You may now tighten all clamps and bolts. Installation complete!

### TigerClamp Location Chart



**DRIVER SIDE  
THIS SIDE UP**

**PASSENGER SIDE  
FLIP OVER**



4X  $\varnothing$  .438