

ridetech

41260000 68-74 Nova TigerCage

Basic Cage

1	41260904	Main hoop assembly
1	41260906	Driver side hoop mount
1	41260905	Passenger side hoop mount
2	41260911	Main hoop reinforcement plate (inside quarter)
2	41260910	Main hoop reinforcement plate (under car)
1	41260903	Driver side package tray bar
1	41260902	Passenger side package tray bar
2	41260907	Package tray reinforcement plate
1	41260900	Passenger side trunk bar
1	41260901	Driver side trunk bar
2	41260909	Trunk bar reinforcement plate (under car-outer)
2	41260908	Trunk bar reinforcement plate (under car-inner)
2	49990005	Clamp tab
1	49990003	TigerClamp P (threaded)
1	49990001	TigerClamp P
1	49990004	TigerClamp D (threaded)
1	49990000	TigerClamp D
1	90002276	Tube of Anti-Seize

Hardware:

16	99371023	3/8" x 1" USS Gr. 8 SHCS	Clamps / Main hoop to mount
4	99371025	3/8" x 1" USS Gr.8 bolt	M.H. mount reinforcement plate to pinch weld
8	99373005	3/8" Lock Washer	M.H. mount to inside reinforcement plate
32	99371004	3/8" x 1 1/4" USS Gr. 8bolt	M.H. mount to reinforcement plates/ trunk bars
36	99372001	3/8" USS Gr.8 Nylok nut	M.H. mount reinforcement plates
72	99373002	3/8" SAE flat washer	Main hoop mount / trunk bars
2	49990008	1/2" x 1 1/2" 12 point Gr. 8	Bar to clamp tab
2	49990009	1/2" Flange nut	Bar to clamp tab



41260906



41260907



41260909



41260908



41260910



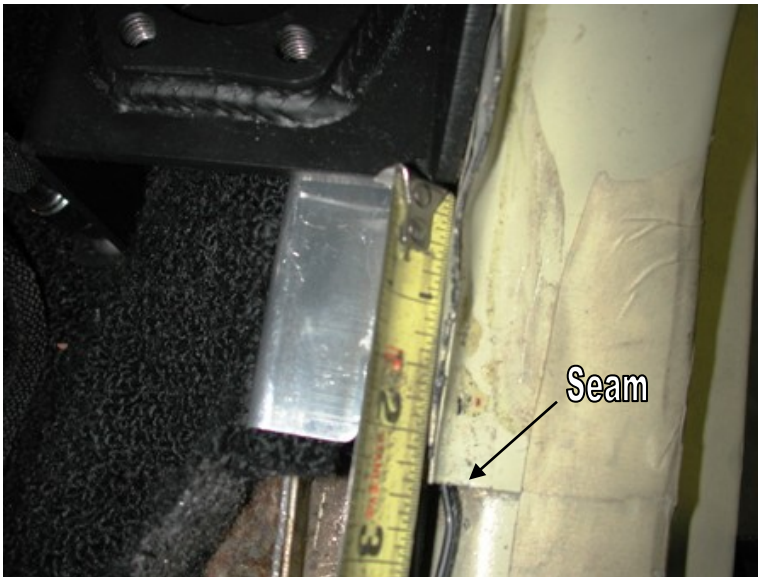
41260911



49990005

41260000 Installation Instructions

- Initial fitment of the floor mount brackets must be done under the carpet. Final installation can be done under or over the carpet.
- Use Anti-Seize on all fasteners that are threaded into stainless clamps or brackets.
- Install all bars before final tightening.
- Always tighten the tab side of the clamp first.
- Torque all 3/8" fasteners to 45 ft-lbs and all 1/2" fasteners to 75 ft-lbs.
- Make sure the clamp is exactly where you want it before tightening as the clamp may scratch the tubing.
- **Watch for fuel and brake lines when drilling holes through the floor pan.**



1. The first bracket to be mounted needs to be the main hoop floor mount. It should be mounted 2 3/8" behind the rocker panel seam.



2. The wire trough cover needs to be notched to allow clearance for the hoop mount. Mark the bracket location on the wire trough cover. Remove cover and cut the marked section out.



3. Using the bracket as a template drill four 3/8" holes in the floor pan. Fasten the upper holes in the bracket to the quarter panel structure with two 3/8" x 1 1/4" bolts, flat washers and Nylok nuts. **A reinforcement plate will be installed inside the quarter panel.**



4. Secure the lower portion of the bracket to the floor pan with two 3/8" x 1 1/4" bolts, flat washers and Nylok nuts. Another reinforcement plate will be installed under the car. It will also meet up with the body seam.

5. Two more 3/8" holes must be drilled through the body seam. 3/8" x 1 1/4" bolts, flat washers and Nylok nuts will be used here.

6. Fasten the main hoop to the mounts using 3/8" x 1" Socket Head Cap Screws and lock washers.



7. In order to keep the "T" in the casting facing up, and the bolts facing the correct direction, **there are two different direction clamps.** Be very careful as to which clamp halves you are bolting together. Refer to the image on page 6 for clamp locations.

8. A correctly assembled clamp should look like the one in the picture shown to the left; **there should be a gap on one side for the tab to slide into.**



9. The next bar to be installed is the package tray bar.

10. Before installing the bar, use the template on page 7 to drill four holes in the top of the package tray for the bar flange to bolt to.

11. Fasten the clamp to the main hoop with the tab facing rearward. Use clamp D on the driver side and clamp P on the passenger side.



12. The other end of the bar will attach to the top of the package tray. Drop four $3/8$ " x $1\ 1/4$ " bolts with flat washers down through the package tray.



13. The lip around this opening in the package tray will interfere with the trunk bar bracket. The lip can be cut with a die grinder and flattened with a pair of pliers.



14. Bolt the trunk bar up to the package tray bar with 3/8" Nylok nuts and flat washers.

15. Using the bracket as a template drill two 3/8" holes through the vertical surface of the package tray.

16. Place the reinforcement plate inside the car and fasten with two 3/8" x 1 1/4" bolts and Nylok nuts.

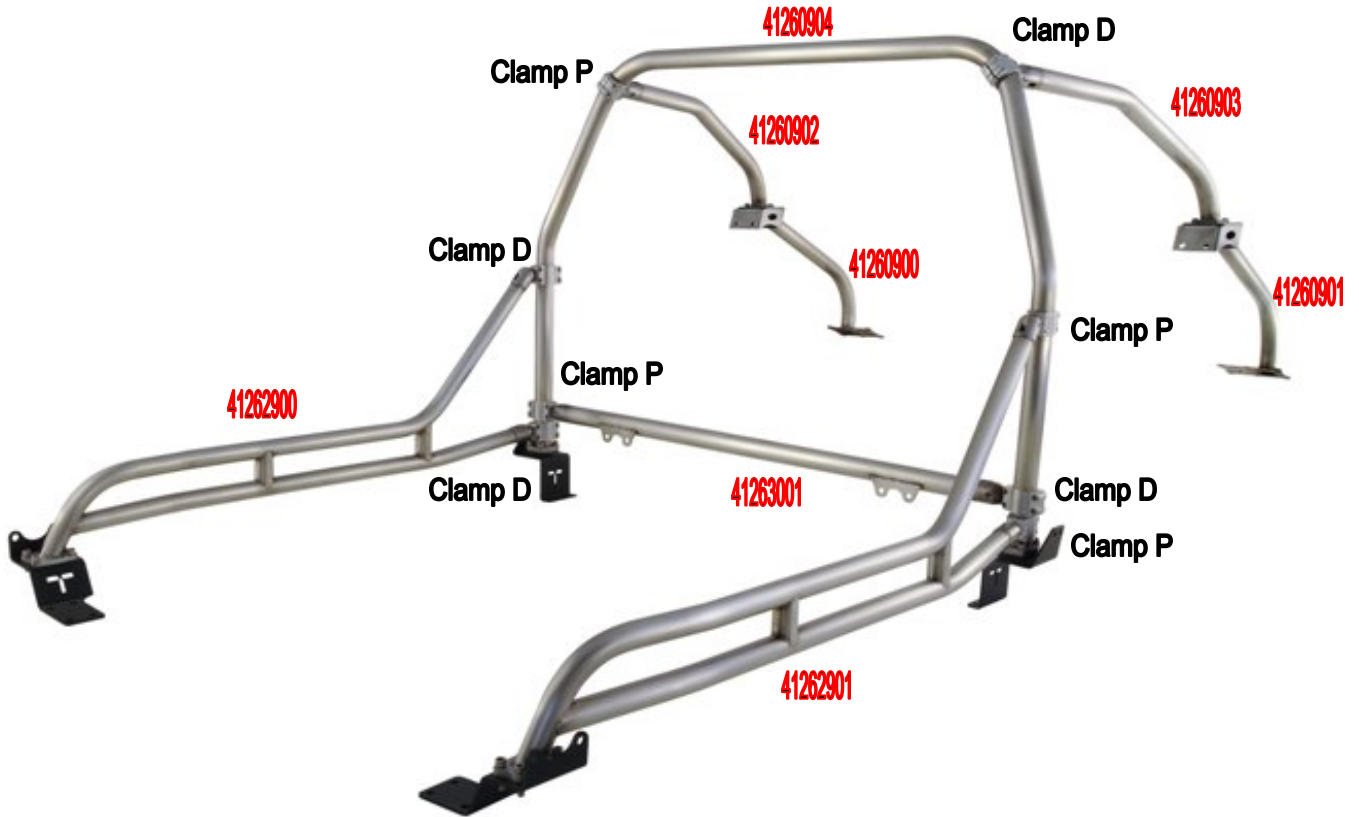


17. Using the trunk bar plate as a template, drill six 3/8 holes through the trunk floor. Drop six 3/8" x 1 1/4" bolts with flat washers down through the holes.

18. Place the reinforcement plates up against the bottom of the trunk pan (one on each side of the frame rail) and secure with 3/8" Nylok nuts and flat washers.

Note: The plate with 4 holes will be installed to the outside of the rail.

TigerClamp Location Chart



Package Tray Bar Template

