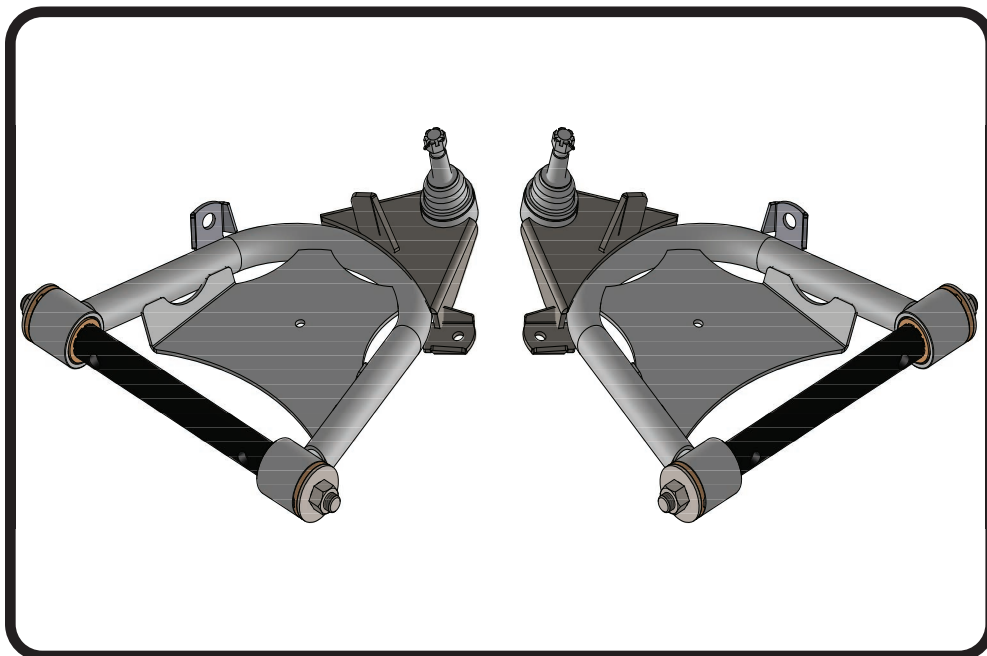
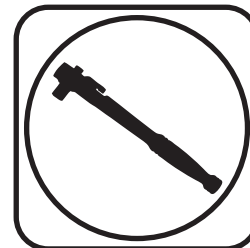
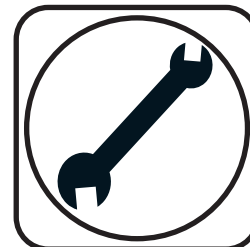




C10 CoolRide StrongArms

Part # **11341499**(63-70)/**11351499**(71-87)

Recommended Tools



C-10 CoolRide Lower StrongArms Installation Instructions

Table of contents

Page 2..... Included components

Page 3..... Installation

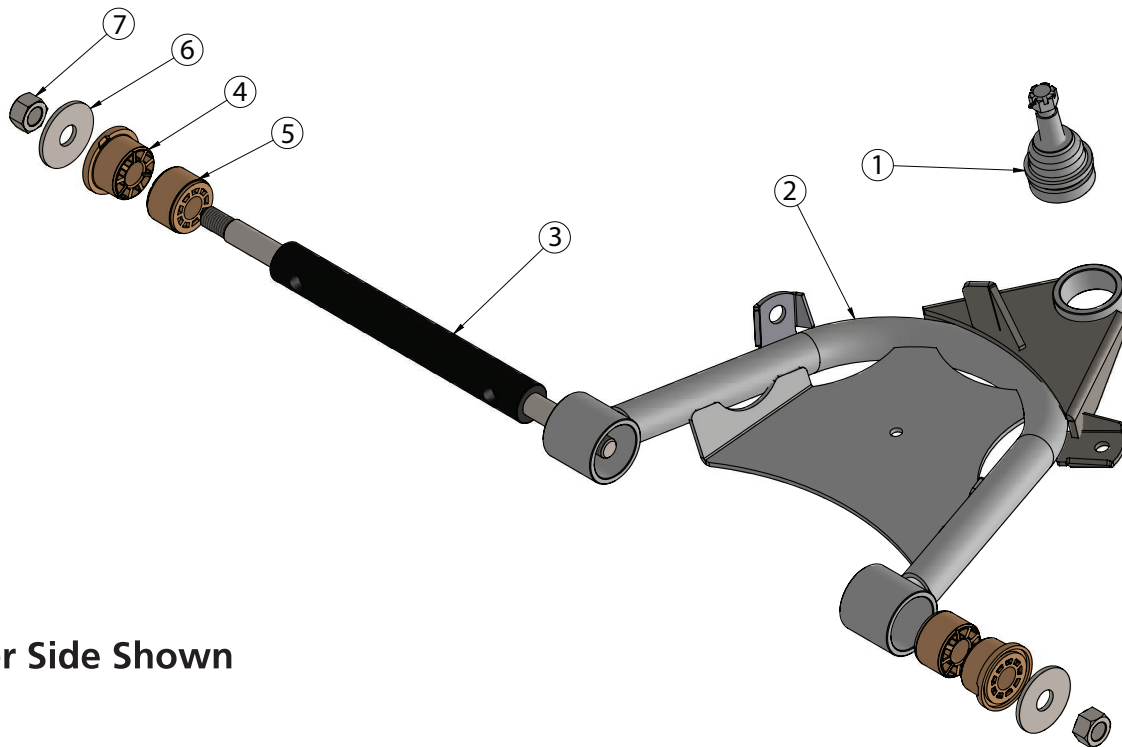
Note: These control arms were designed for use with the Ridetech bolt-on shock kit & MuscleBar swaybar. The factory shocks and sway bar will not work.





Upper Control Arm ComponentsIn the box

Item #	Part Number	Description	QTY
1	90000912/90000909	(63-70/73-87) - Lower Ball joint Assembly	2
2	90003152	Driver Lower Control Arm (Shown)	1
2	90003153	Passenger Lower Control Arm	1
3	90002430	Lower Control Arm Shaft	2
4	70010755	Control Arm Bushing - 2.5" OD Ledge	4
5	70011465	Control Arm Bushing - No Ledge	4
6	99753001	3/4" USS Flat Washer	4
7	99752005	3/4"-16 Top Lock Nut	4



Driver Side Shown

Getting Started.....

Note: The 63-87 C-10's have similar control arms through the years, but the ball joints used were different. The year breaks are as follows: 63-70, 71-72, 73-87. Be sure to use the correct ball joint for the year of spindle you are using.

Ball joints:

- | | | |
|---------------|----------------|----------------|
| 63-70: | Upper-90000911 | Lower-90000912 |
| 71-72: | Upper-90000902 | Lower-90000909 |
| 73-87: | Upper-90000910 | Lower-90000909 |

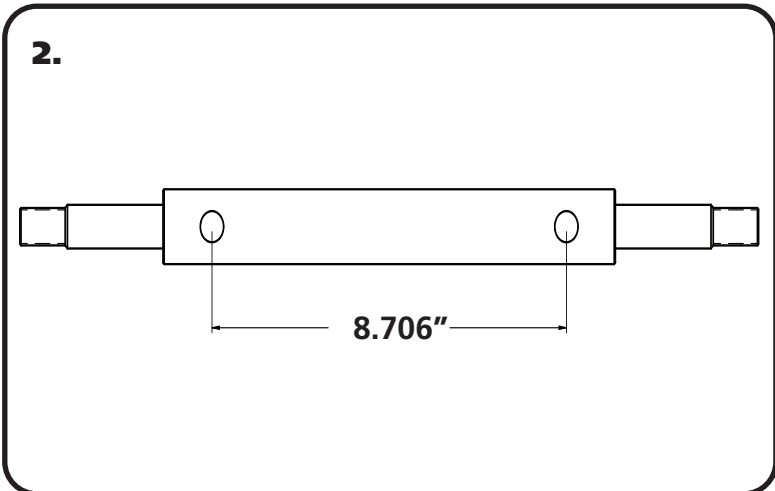


Installing Lower Control Arm



8. The lower control arm is installed using the factory U-bolts and nuts. The lower control arm is located by a pin that is in the center of the front u-bolt cradle. This pin will go into the hole in the control arm shaft to help locate the control arm.

NOTE: We have ran across some trucks where the rear pin is the locator pin. It will locate the control arm correctly too.



9. The Lower Cross Shaft has 2 different locating Hole patterns. These StrongArms use the 8.706" center to center locating holes. The Pin in the Cross Shaft Saddle that was pointed out in **Image 2**, will locate into these Holes. Use the OEM Hardware to attach the Lower making sure the Locating Pin is in the 8.706" center to center Holes.



10. **Image 3** is an example of the lower bolted to the crossmember. Install 3/4" ID Washer on to each end of the cross shaft against the bushing. Then install the 3/4"-16 lock nut. Snug the nut up against the washer. You want the suspension move freely through its travel.