



350 S. St. Charles St. Jasper, In. 47546

Ph. 812.482.2932 Fax 812.634.6632

www.ridetech.com

Part # 12014099
49-51 Mercury Rear AirOverLeaf Kit

Components:

2	90007012	F7012 rolling sleeve air spring
2	90002495	Leaf spring bracket
2	90002494	Leaf Spring Bracket Clamp
2	90000070	Air spring roll plate (customer drills to 1/2")
2	90000033	Upper bracket – Under frame
2	31952201	1/8" npt x 1/4" tube air fitting - elbow

Hardware:

2	99752004	3/4" SAE jam nut	Air spring to upper bracket
2	99501001	1/2" x 1" USS bolt	Air spring to lower bracket
2	99503002	1/2" lock washer	Air spring to lower bracket
2	99503003	1/2" SAE flat washer	Air spring to lower bracket
8	99371004	3/8" x 1 1/4" uss bolt	Upper bracket to frame
8	99372002	3/8" USS Nylok nut	Upper bracket to frame & Leaf Spring Bracket
16	99373003	3/8" flat washer	Upper bracket to frame & Leaf Spring Bracket
4	99371047	3/8" Carriage Bolt	Leaf Spring Bracket



350 S. St. Charles St. Jasper, In. 47546

Ph. 812.482.2932 Fax 812.634.6632

www.ridetech.com

REAR INSTALLATION

SUPPLEMENT FOR MOUNTING AIRSPRING ON TOP OF LEAFSPRING

NOTE: WHEN INSTALLING THE FITTING INTO THE AIRSPRING BE SURE TO USE SOME TYPE OF THREAD SEALANT, THE COMPOUND YOU SEE ON THE THREADS IS NOT A SEALANT.

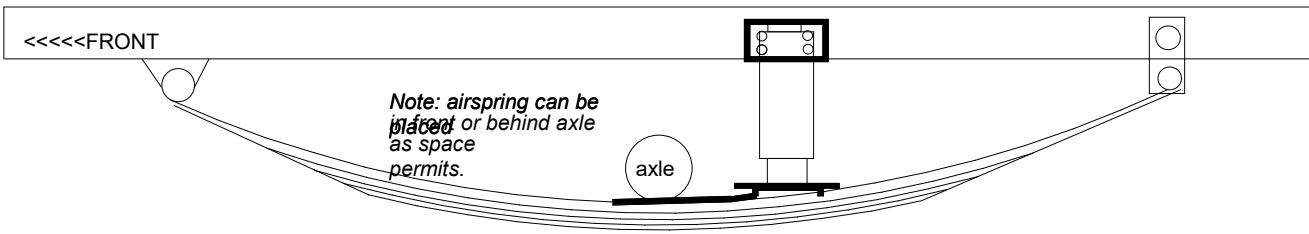
1. This installation is performed with the vehicle at ride height. When you raise the vehicle to a comfortable working height, support it by the axle housing.
2. Attach the lower airspring bracket to the top of the leafspring, preferably behind the rearend, using the attachment hardware provided. Refer to Illustrations below for assembly method of leaf spring bracket.. **NOTE:** On some vehicles, a softer ride is obtained by removing leafs from the spring pack. Be sure to leave at least 2 leafs in the spring pack for stability.
3. Attach the airspring to the lower bracket.
4. The upper bracket can now be attached to the airspring and its placement on the frame rail can be determined. If the leafspring is under the frame, the upper bracket will be a "J" shaped piece that the airspring screws into. If the leafspring is beside the frame, the upper bracket will be an angle bracket that will bolt on to the frame. Using the proper inflated dimensions, check for airspring clearance to nearby obstacles. [Refer to the airspring dimension chart.] Note that the proper inflated dimensions will not be the same as the uninflated dimensions.
5. Mark the bolt holes for drilling or clamp in place to weld.[Remove airspring before welding to avoid weld splatter damage!]
6. Reassemble, inflate, and re-inspect for proper clearance.

REMEMBER: THE AIRSPRING BELLOWS MUST NOT TOUCH ANYTHING AT ANYTIME!! IT IS THE FINAL RESPONSIBILITY OF THE INSTALLER TO DETERMINE ADEQUATE CLEARANCE.

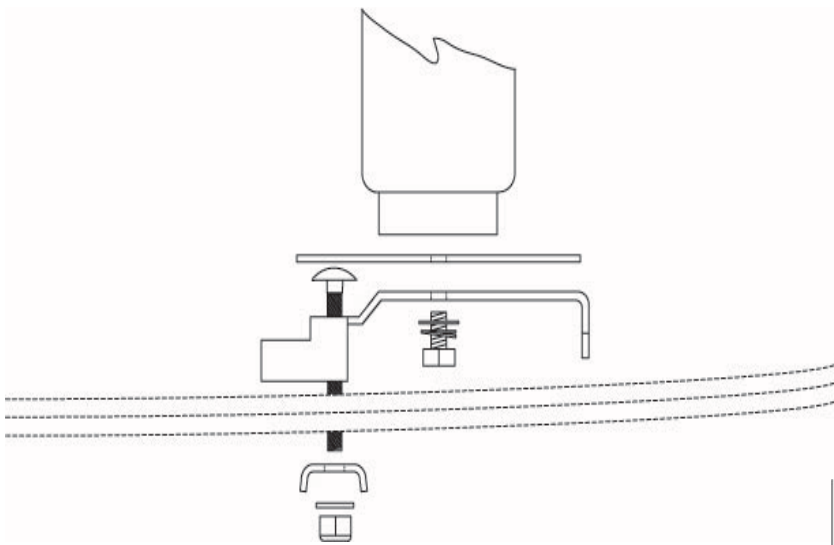
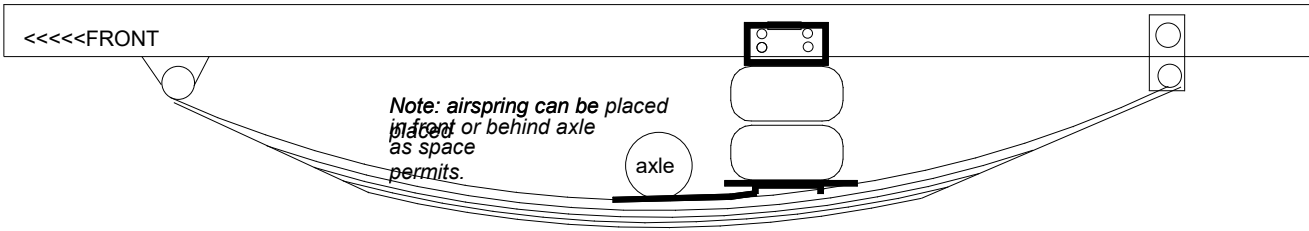
CAUTION!!! EXCEEDING THE DIMENSIONS IN THE CHART BELOW MAY RESULT IN SUDDEN AIRSPRING FAILURE! PROPER CLEARANCES MUST BE MAINTAINED AT ALL RIDE HEIGHTS AND STEERING ANGLES. BUMPSTOPS MUST BE USED TO LIMIT SUSPENSION TRAVEL BEFORE THESE DIMENSIONS ARE EXCEEDED.

PLEASE CALL RIDETECH IF YOU HAVE ANY QUESTIONS.

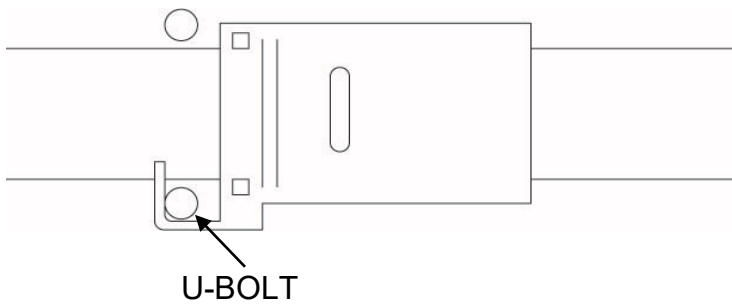
Installation using 7000 Series or 9000 Series Airspring



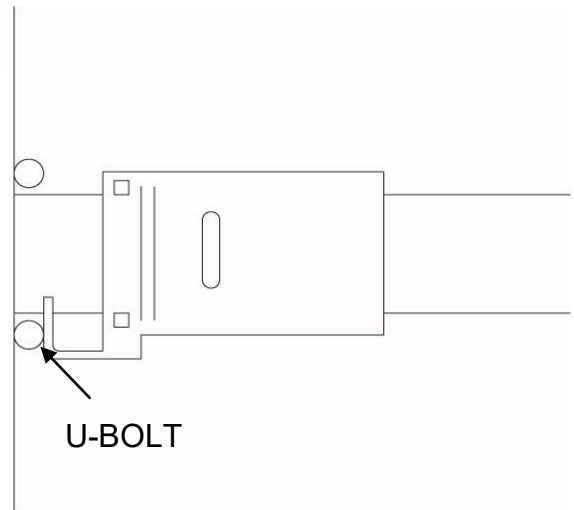
Installation using F6957 Airspring



SIDE VIEW OF ASSEMBLY

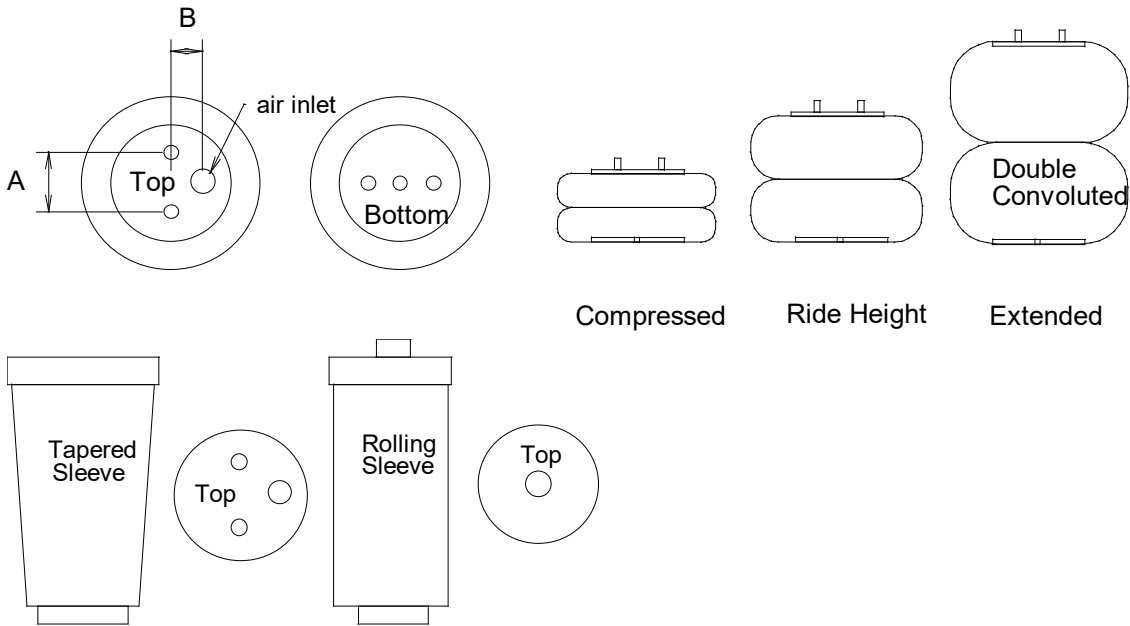


U-BOLT



U-BOLT

THE LEAF SPRING BRACKET CAN BE INSTALLED HOOKED ON THE U-BOLT OR TOUCHING U-BOLT AS SEEN IN ABOVE ILLUSTRATIONS.
DIMENSION CHART



AIRSPRING DIMENSION CHART

PART#	TYPE	Capacity @100psi	Compressed Height	Ride Height	Max. Height	Max Diameter	Bolt Pattern
255C [F6957]	Double Convoluted	2040#	3" [built in bumpstop]	5"-6"	7"	6.5"	A=1.75 B=.875
224C [F0335]	Double Convoluted	3150#	3"	5"-6"	8"	8.0"	A=2.75 B=1.312
26C [F7325]	Double Convoluted	3400#	3"	5"-6"	10"	8.5"	A=2.75 B=1.312
20 [F6908]	Double Convoluted	4790#	3"	7"-8"	11"	9.9"	A=3.50 B=1.75
F9000	Tapered Sleeve	1500#	4.5	8" - 9"	13"	5"	A=2.75 B=1.312
F9002	Tapered Sleeve	1500#	4.5	7" - 8"	12"	5"	A=2.75 B=1.312
F9003	Tapered Sleeve	1500#	4.5	6.5"-7"	11"	5"	A=2.75 B=1.312
F9010	Tapered Sleeve	2000#	6.5"	10.5"-11.5"	16"	6.5"	.750 SAE/.250npt
7012	Rolling Sleeve	1020#	4"	7" - 8"	13"	5"	.750SAE/.125npt
7076	Rolling Sleeve	800#	3.5"	5"-6"	9"	4"	.750SAE/.125npt