

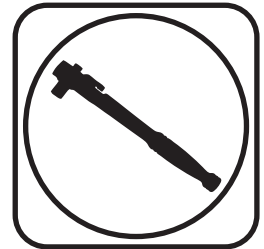


**Part # 12103699**

**1967-1970 Mustang/Cougar Front Upper StrongArms**



Recommended Tools



## 1967-1970 Mustang/Cougar Upper StrongArms Installation Instructions

### Table of contents

Page 2..... Upper Control Arm Components  
Page 3..... Installations

THESE CONTROL ARMS ARE DESIGNED TO BE USED WITH RIDETECH COILOVERS/SHOCKWAVES AND RIDETECH LOWER STRONGARMS.

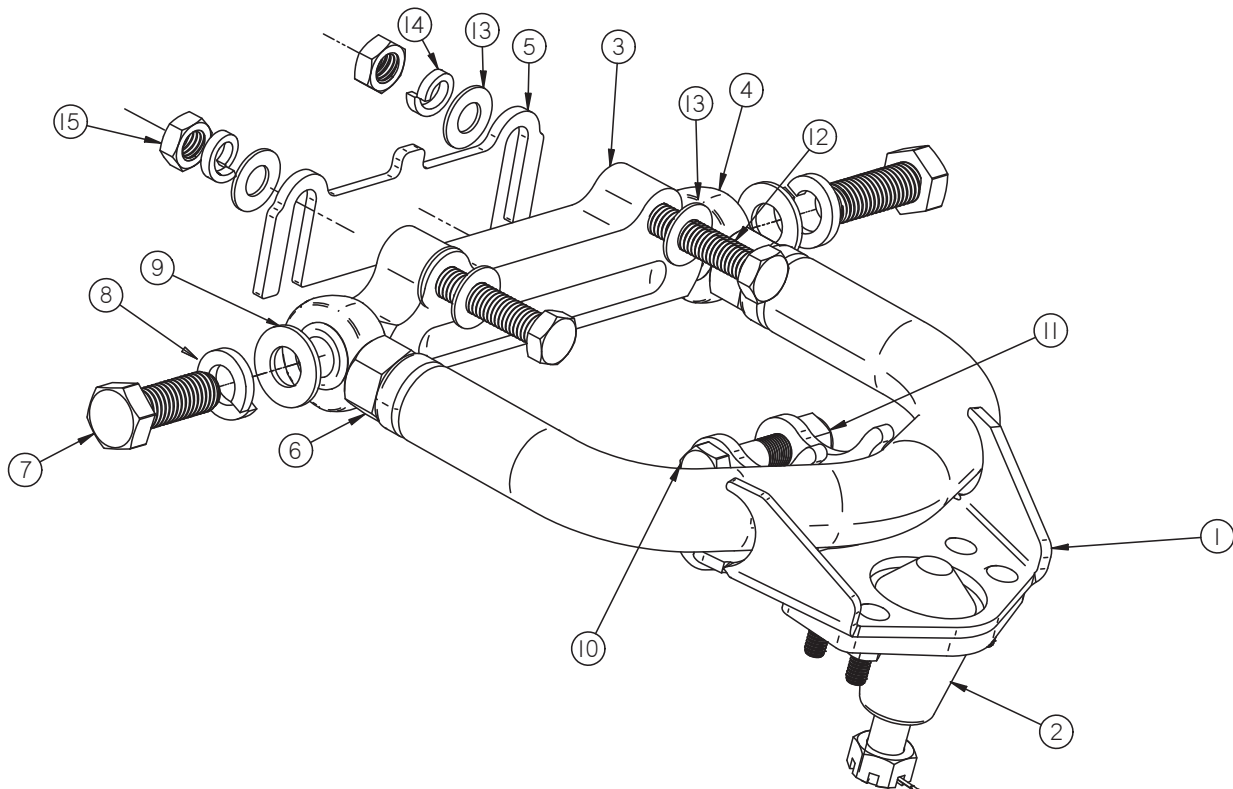
THESE CONTROL ARMS HAVE THE "SHELBY MOD" BUILT INTO THE CROSS SHAFT. THIS MOD LOWERS THE CONTROL ARM PIVOT FOR BETTER CAMBER GAIN DURING SUSPENSION TRAVEL.





### Upper Control Arm Components .....In the box

Item #	Part Number	Description	QTY
1	90000115	Upper Control Arm	2
2	90000930 kit	Upper Ball Joint Kit - Moog # K8036	2
3	90000931	Billet Cross Shaft	2
4	90001589	Heim End - 3/4"-16 thread x 5/8" ID	4
5	90000113	Alignment Shim	2
6	99752004	3/4"-16 Jam Nut	2
7	99621021	5/8"-18 x 2" Gr.8 bolt	4
8	99623002	5/8" Gr. 8 Lock Washer	4
9	99623001	5/8" SAE Gr. 8 Flat Washer	4
10	99501010	1/2"-20 x 2 1/4" Gr.8 Bolt	2
11	99502003	1/2"-20 Thin Nylok Nut	2
12	99501003	1/2"-13 x 2 1/2" Gr.5 Bolt	4
13	99503001	1/2" SAE Flat Washer	8
14	99503002	1/2" Lock Washer	4
15	99502006	1/2"-13 Hex Nut	4





### Installation

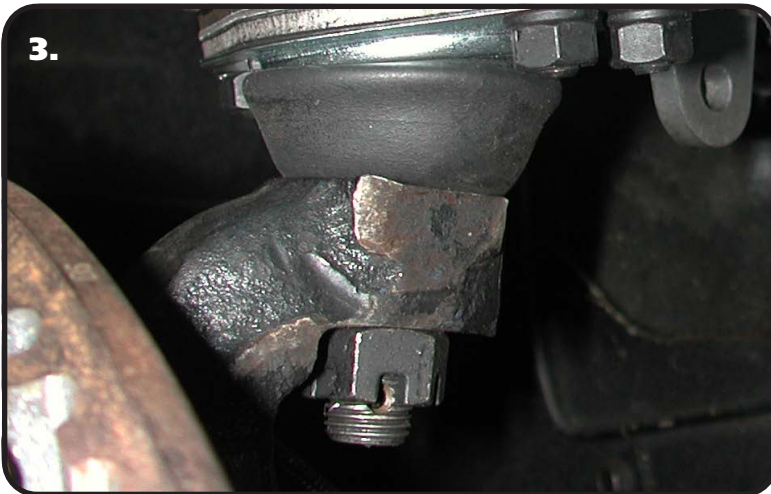
1. Remove the shocks, coil springs & upper control arms from the car. If you are replacing the lower control arms, remove them too. Refer to a Factory Service Manual for the proper method.



**THE UPPER CONTROL ARMS ARE IDENTICAL, SO THEY WILL FIT EITHER SIDE.**

2. Bolt the upper StrongArm to the body using  $\frac{1}{2}$ " x  $2\frac{1}{2}$ " bolts, flat washers and lock washers. A shim is supplied and may need to be installed between the body and the arms to achieve proper alignment. Torque to 75 ft-lbs.

**Note:** The upper arm mounting holes on many cars have been redrilled 1" lower. This is done to improve the handling. Our cross shaft has the drop built into it, make sure to use the factory mounting holes.

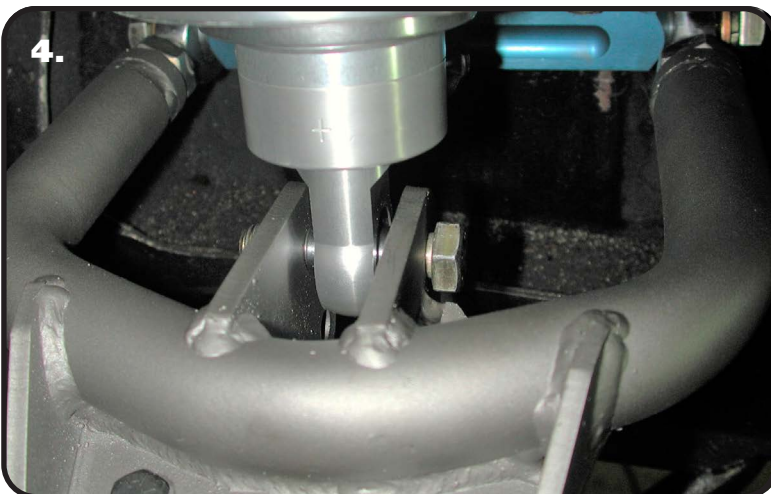


3. Attach the Spindle to the control arms.

#### Torque Specs:

Upper Ball Joint - 60 ftlbs and tighten to line up cotter pin.

Install the Cotter Pin after tightening the ball joint nut.



4. Attach the Shockwave to the upper StrongArm using a  $\frac{1}{2}$ " x  $2\frac{1}{4}$ " bolt and Nylok nut. Torque to 75 ft-lbs.

**Note:** The arms are preset at the factory so the alignment should be close, but the vehicle must be aligned before driving.

#### Suggested Alignment Specs:

Camber:	Street:	-.5 degrees
Caster:	Street:	+3.0 to + 5.0 degrees
Toe:	Street:	1/16" to 1/8" toe in