



350 S. St. Charles St. Jasper, In. 47546  
Ph. 812.482.2932 Fax 812.634.6632

[www.ridetech.com](http://www.ridetech.com)

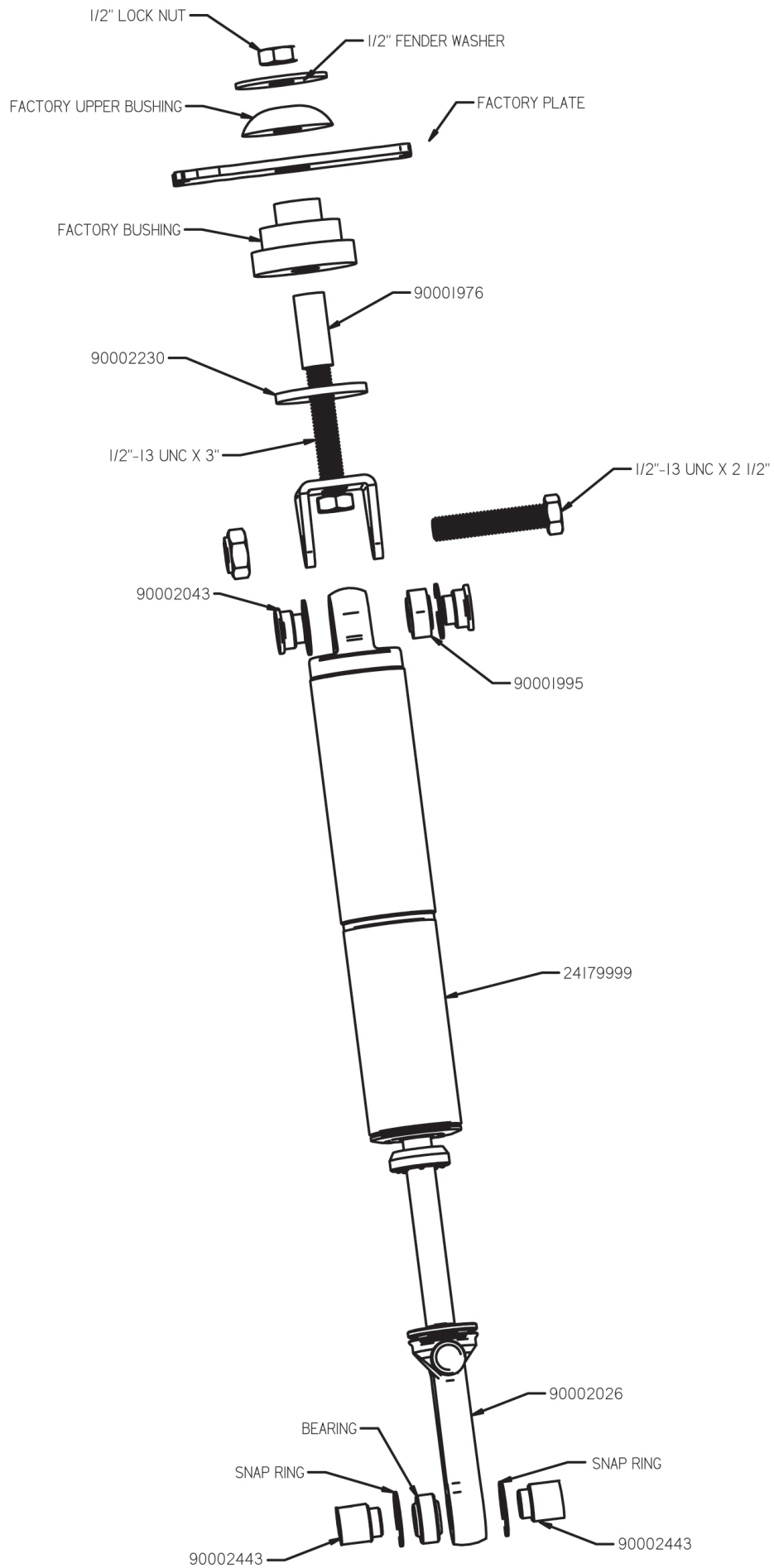
**Part # 13040701**  
**Mopar LX Rear HQ Series Shock Kit**

**Components:**

4	90002443	Aluminum spacers for lower bearing <b>(USES OEM HARDWARE)</b>
4	90002043	Aluminum T-bushing for upper bearing
2	90001621	Upper shock bracket
2	90002230	Upper shock bracket washer
2	90001976	Bushing sleeve (Pressed into factory bushing)
2	HQ Series adjustable shocks ( <i>includes the following</i> )	
2	982-10-807	7" stroke Master Series single adjustable shock
2	90002026	4" Master Series eyelet (w/ knob)
4	90001994	.625" I.D. bearing (installed into shock body)
4	90001995	Bearing snap ring

**Hardware:**

2	99501003	1/2" x 2 1/2" USS bolt	Shock to upper bracket
4	99502001	1/2" USS Nylok nut	Shock to upper bracket & OEM Mount
2	99501004	1/2" x 3" USS bolt	Shock mount to OEM Mount
2	99503004	1/2" Fender washer	Shock bracket to factory mount



# COOL RiDE®

## Installation Instructions

1. Raise the vehicle to a safe and comfortable working height with the suspension hanging freely.
2. Remove the factory shock absorbers and coil spring. Refer to a factory service manual for proper disassembly procedures.



3. Press the 1.6" bushing sleeve into the oem rubber shock mount.

4. Bolt the upper shock mount to rubber oem mount using the 1/2" x 3" bolt, Nylok nut and fender washer. The 2" plate must be installed between the bracket and the rubber bushing.

5. Using a 1/2" x 2 1/2" bolt and Nylok nut, fasten the top of the shock to the upper mount. **The shock body should be mounted on top.** One aluminum T-bushing must be installed on each side of the bearing.



6. Bolt the eyelet to the lower control arm using the OEM Bolt & nut. The thicker aluminum spacer must be installed on each side of the bearing.



### Shock Adjustment

#### Shock adjustment 101- Single Adjustable

##### Rebound Adjustment:

How to adjust your new shocks.

The rebound adjustment knob is located on the top of the shock absorber protruding from the eyelet.

You must first begin at the ZERO setting, then set the shock to a soft setting of 20.



-Begin with the shocks adjusted to the ZERO rebound position (full stiff). Do this by rotating the rebound adjuster knob clockwise until it stops.



-Now turn the rebound adjuster knob counter clock wise 20 clicks. This sets the shock at 20. (settings 21-24 are typically too soft for street use).

##### Take the vehicle for a test drive.



-if you are satisfied with the ride quality, do not do anything, you are set!

-if the ride quality is too soft increase the damping effect by rotating the rebound knob clock wise 3 clicks. **CONTINUE ON NEXT PAGE.**

##### Take the vehicle for another test drive.



-if the vehicle is too soft increase the damping effect by rotating the rebound knob clock wise 3 additional clicks.



-If the vehicle is too stiff rotate the rebound adjustment knob counter clock wise 2 clicks and you are set!

Take the vehicle for another test drive and repeat the above steps until the ride quality is satisfactory.

##### Note:

One end of the vehicle will likely reach the desired setting before the other end. If this happens stop adjusting the satisfied end and keep adjusting the unsatisfied end until the overall ride quality is satisfactory.

### STILL HAVE QUESTIONS?

#### Tech line hours

Monday - Friday

8AM - 6PM (EST) ..... 812-482-2932