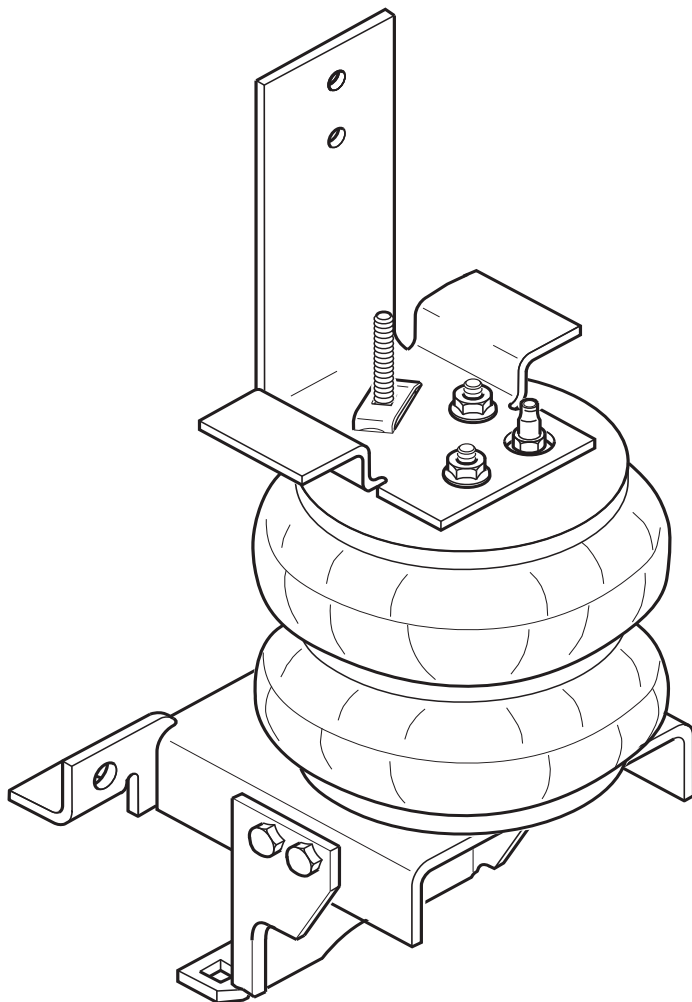




## 81223016 00-06 FORD EXCURSION 4WD

Congratulations - your new TowPro Helper Springs are quality products capable of improving the handling and comfort of your vehicle. As with all products, proper installation is the key to obtaining all of the benefits your kit is capable of delivering. Please take a few minutes to read through the instructions to identify the components and learn where and how they are used. It is a good idea to start by comparing the parts in your kit with the parts list below.



Components	Part#	QTY
AIR SPRING	6781	2
UPPER BRACKET	5302	2
LOWER BRACKET	5304	2
LOWER BRACE	5303	2
BRACKET STRAP	1163	2
BAIL CLAMP	3077	2
AIR LINE TUBING		1
HEAT SHIELD	1004	1

Hardware	Part#	QTY
THERMAL SLEEVE	0899	2
3/8"-16 X 1-1/2" HEX BOLT		4
3/8"-16 X 1" HEX BOLT		8
3/8"-16 FLANGE NUT		26
3/8"-16 X 3/4" FLANGE LOCK		2
3/8"-16 X 3" CARRIAGE BOLT		4
3/8"-16 X 1.5" CARRIAGE BOLT		2
3/8" FLAT WASHER		3
5/16" FLAT WASHER		4

### WARNING!

Do not inflate this assembly when it is unrestricted. The assembly must be restricted by the suspension or other adequate structure. Do not inflate beyond 100 P.S.I. Improper use or over inflation may cause property damage or severe personal injury.

**NOTE:** Both illustrations are of the left, or driver's side of the vehicle. Reverse any orientations when installing the right, or passenger's side assembly.

### KIT TO FRAME ASSEMBLY

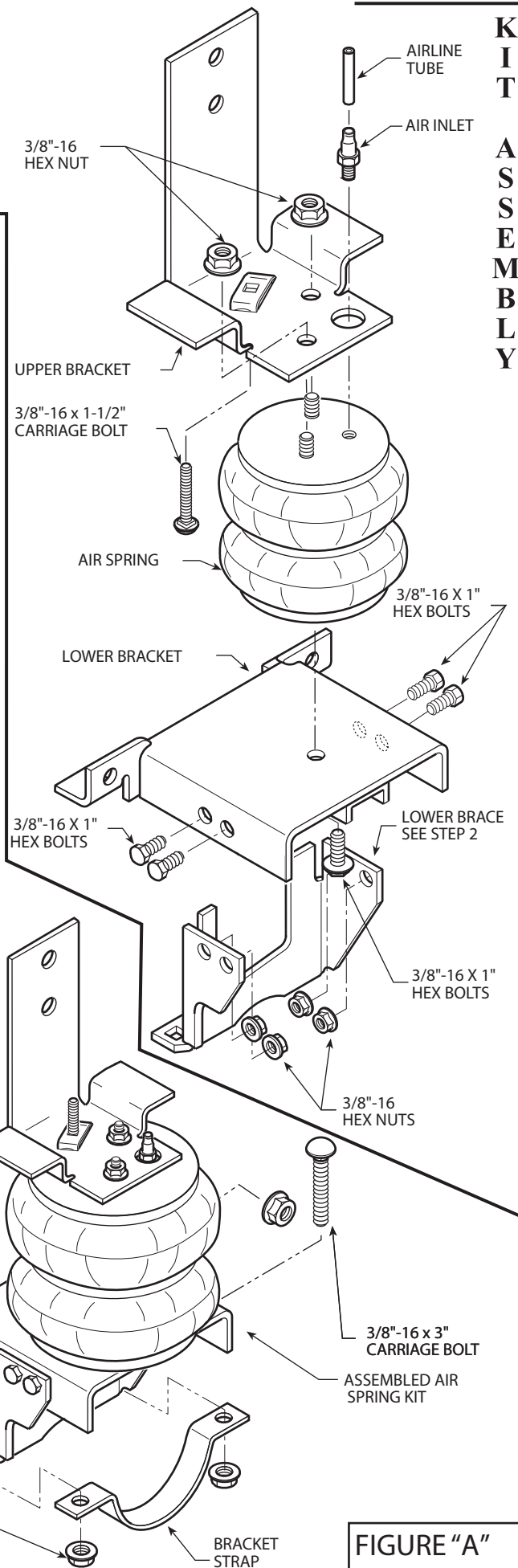
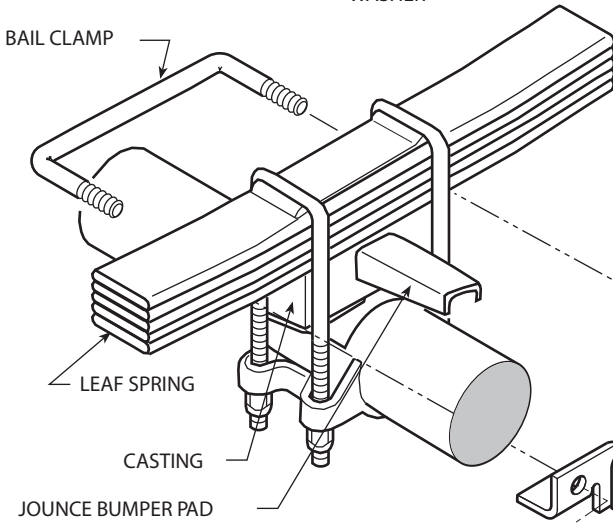
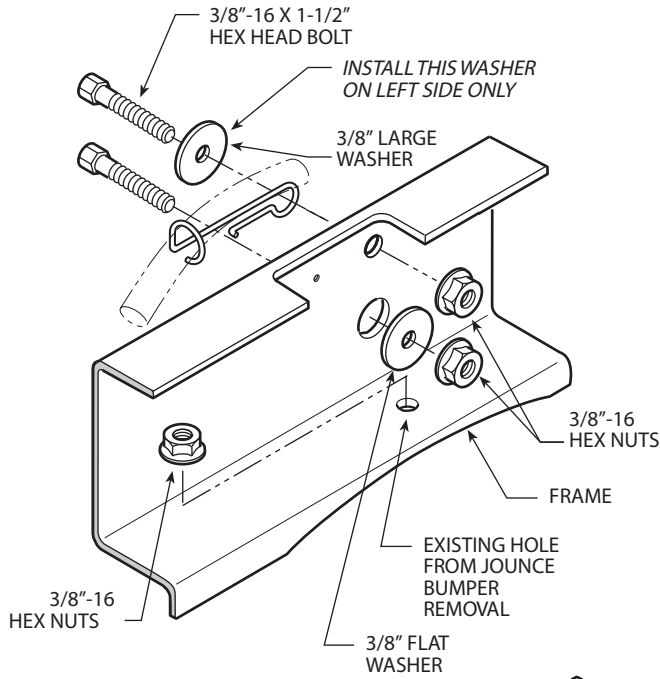
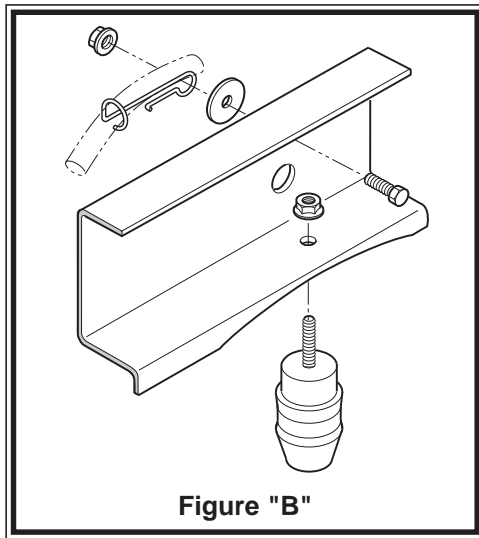
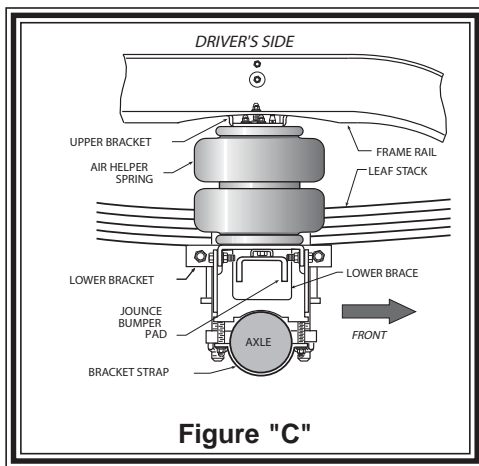


FIGURE "A"



**Figure "B"**



**Figure "C"**

### **STEP 1 - PREPARE THE VEHICLE**

Place the vehicle on a solid level surface. Remove negative battery cable. Take necessary safety precautions such as using wheel chocks when working on your vehicle. Remove the jounce bumpers and the driver side brake line clip, bolt, and nut as shown in Figure "B". This vehicle does not have to be jacked up to install the kit.

### **STEP 2 - PRE-ASSEMBLE THE KIT**

Select one air spring and one upper bracket from your kit. Insert the 1-1/2" carriage bolt upward into square space in upper bracket. Attach the upper bracket to the air spring using the 3/8"-16 flange lock nuts. Install the brass air fitting into the air entrance hole and tighten securely to engage the orange thread sealant to ensure proper seal.

#### **LOWER BRACKET ASSEMBLY**

Select one lower bracket and one lower brace from your kit. Fasten the lower brace to the lower bracket using the 3/8"-16 x 1" hex bolts and lock nuts as shown in Figure "A". Assemble the lower bracket assembly to the air helper spring using the 3/8"-16 x 3/4" flanged hex bolt. Before tightening the 3/8"-16 flanged hex bolt, rotate the air spring so that the outside vertical edge of the upper bracket is parallel with the front face of the lower bracket and brace assembly, see Figure "A".

### **STEP 3 - INSTALLING THE ASSEMBLY TO THE VEHICLE**

Place the assembly on the vehicle by installing the upper bracket so that it lays against the outside of the frame rail. Insert the carriage bolt in the upper bracket to the existing hole in the frame rail from the jounce bumper removal. Attach with a 3/8"-16 flange lock nut. The lower brace will sit on the axle, and the lower bracket will rest on the jounce bumper pad, refer to Figure "A" and "C". Push the lower bracket toward the leaf spring "U" bolts.

Attach the upper bracket to the frame rail using the 2 existing holes in the frame rail and the 3/8"-16 x 1-1/2" hex bolts, 3/8"-16 flange lock nuts, and 3/8" flat washers (flat washer used only for the larger hole in frame). NOTE: The break line clip shown in Figure "A" and "B" exists only on the driver's side of the vehicle. On the driver's side, the bolt will reattach the clip outside of the upper bracket as shown. The 3/8" flat washer on the outside of the frame rail is used only on the driver's side to hold the brake line clip in place. No washer is used on the outside of the passenger's side frame rail.

Install the bail clamp around the casting as shown in Figure "A". Insert the bail clamp through the holes in the lower bracket as shown in Figure "A". Install 3/8"-16 flange lock nuts and draw the lower bracket next to the leaf spring "U" bolts. Using the 3/8"-16 x 3" carriage bolts attach the bracket straps to the lower brace making sure the bracket straps are securing the kit assembly to the axle, refer to Figure "C".

### **STEP 4 - INSTALLATION OF THE PASSENGER'S SIDE ASSEMBLY**

Follow steps 1-3 with reverse orientations for assembly and installation of the passenger's side assembly. (Note that on the right side (passenger side), the assembly will sit close to the heat shield located on the front of the axle.)



### **STILL HAVE QUESTIONS?**

#### **Tech line hours**

Monday - Friday

8Am - 6PM (EST) ..... 812-482-2932